



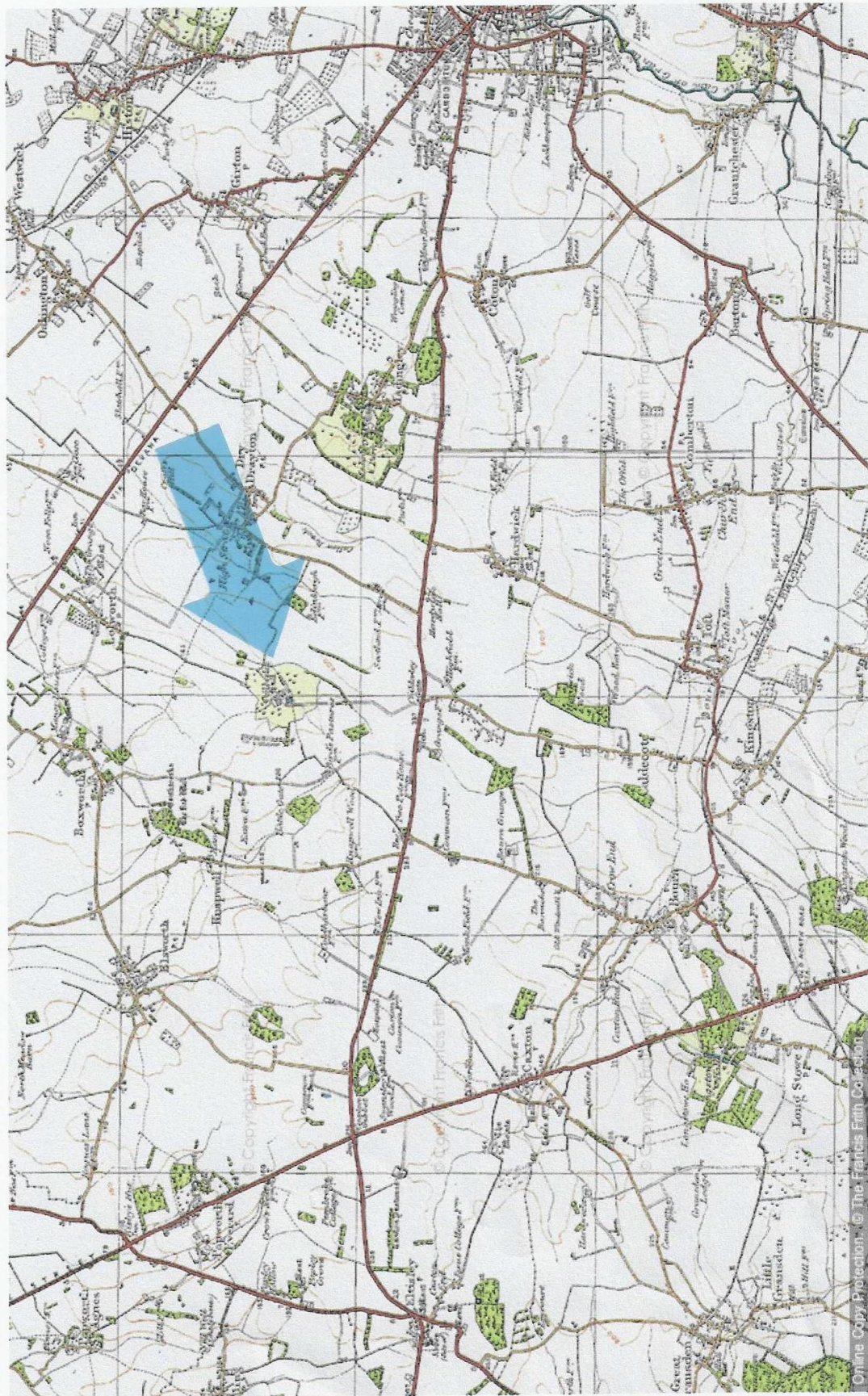
The enclosed list is a record of coins and artefacts recovered from the site outlined on the attached map and because of condition and time restraints does not include definitive identification or valuation.

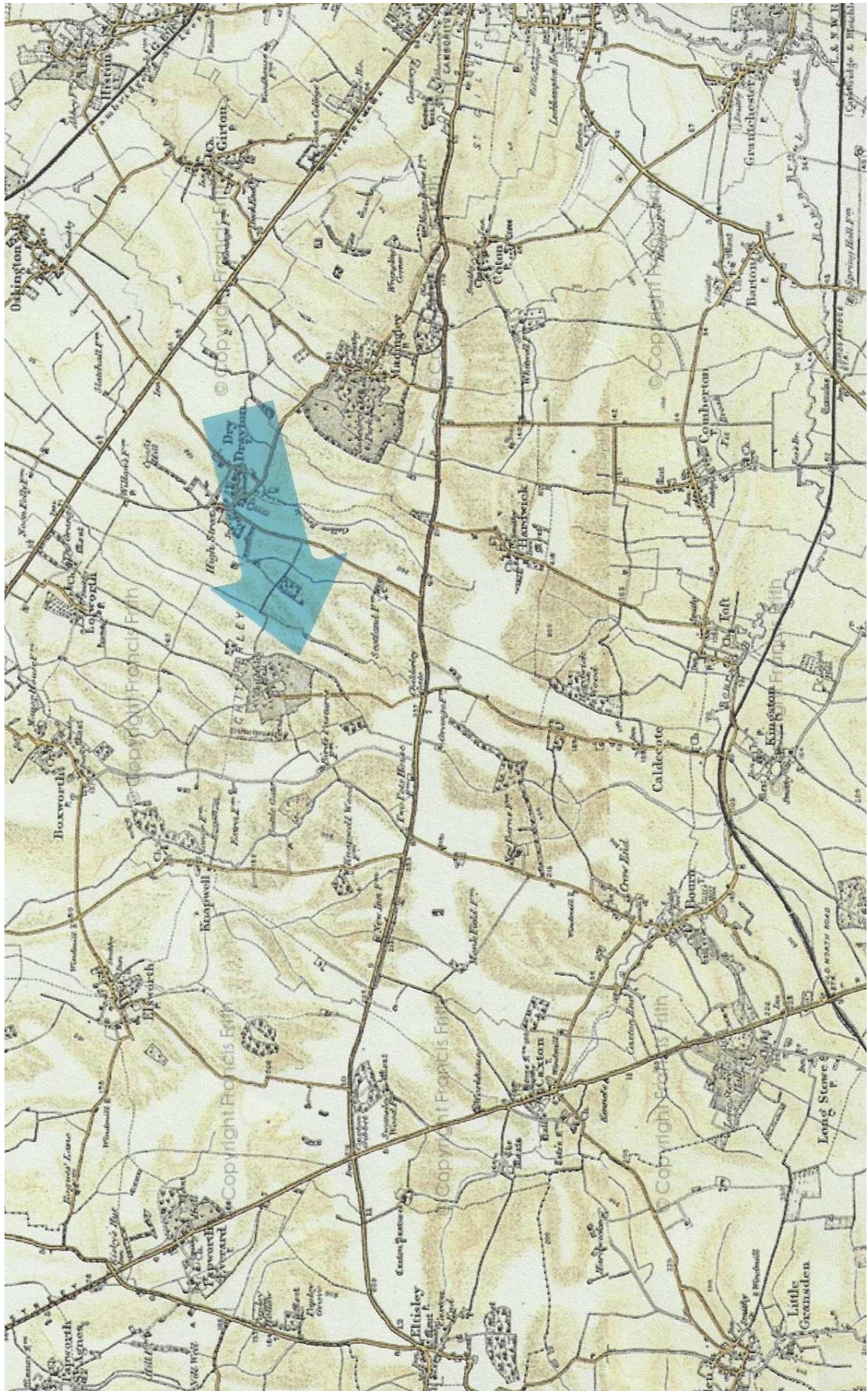
The finds were recovered randomly from all over the fields with no apparent heavy concentration at any one point, the depth of the finds varied from surface to approximately eight inches.

The site, which is part of Childerley Estate, is situated on the clay uplands of Cambridgeshire which archaeological field walking information suggests the site may have been in use from the stone age to the current date for stock-raising and arable cultivation. Due to centuries of ploughing and use of chemicals much of the metallic archaeological evidence has been destroyed. It should also be noted that agricultural topsoil is "mobile" as when root crops are harvested some soil is removed and replaced after riddling and washing has taken place but not necessarily in the same field. In the Middle Stone Age, somewhere between 82,000 and 40,000 years ago, it was assumed a small group of nomadic hunter-gathers moved through the forest that then covered this area and concentration of flint was seen on the surface, some of which appeared to have been worked. Since then evidence suggests that the land was then in constant use until the present.

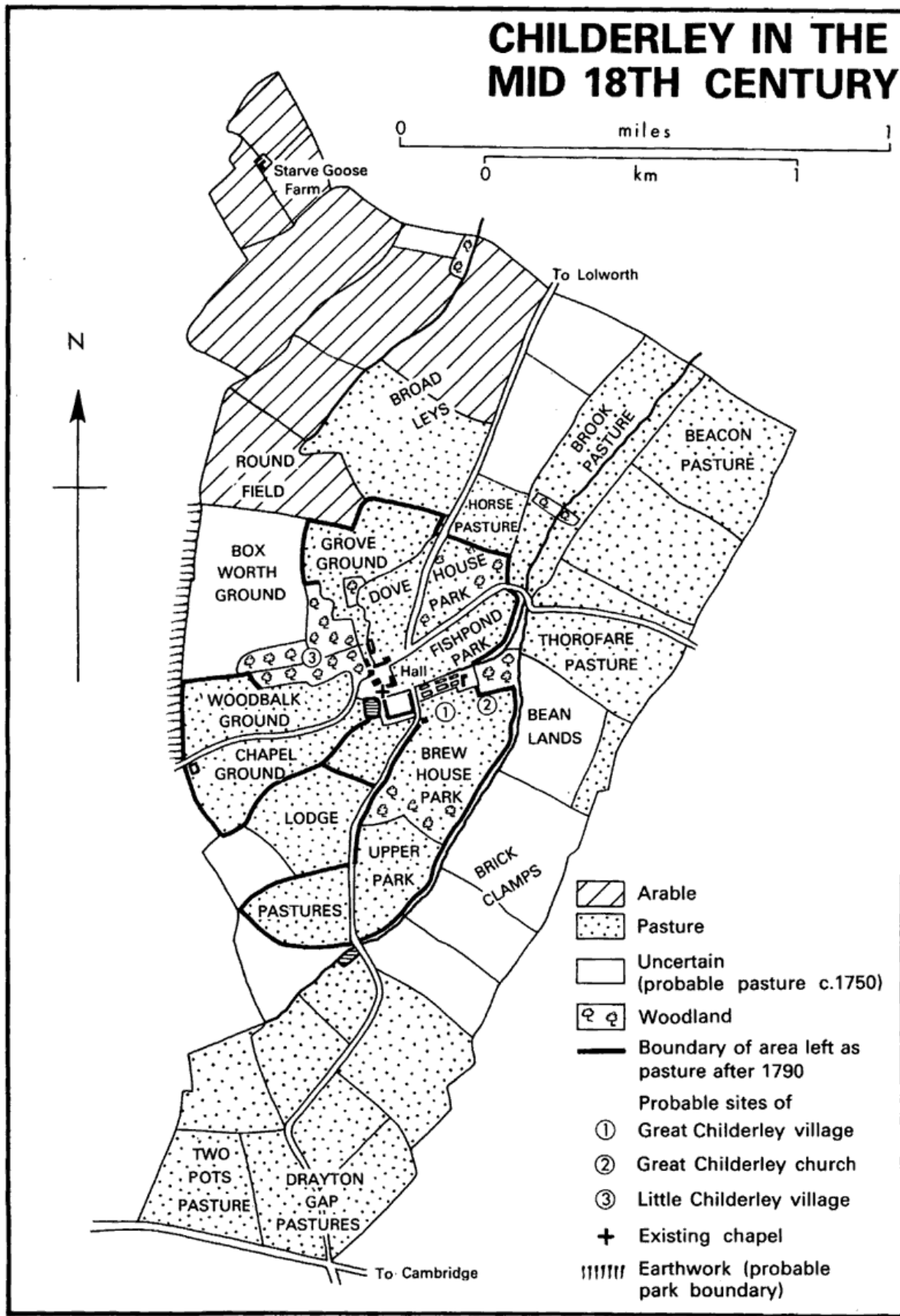


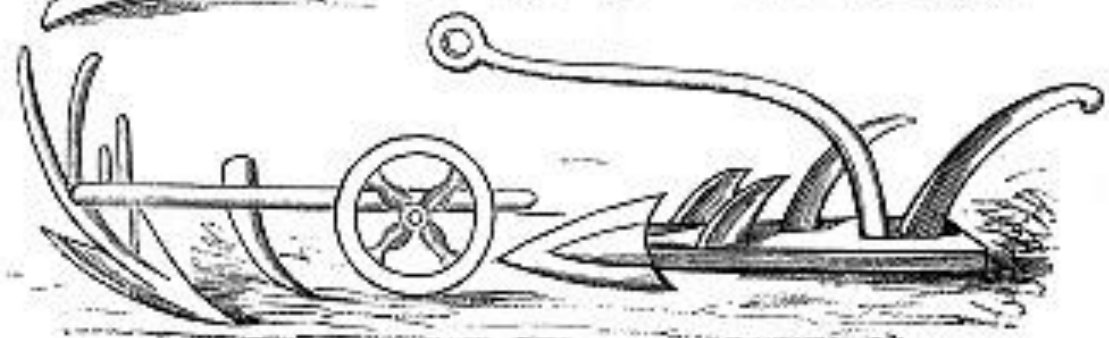
CHILDERLEY HALL





CHILDERLEY IN THE MID 18TH CENTURY





ARTEFACTS

Artefacts recovered ranged from Neanderthal worked flint to Roman to modern day. The majority of finds were made from a copper alloy, many broken or damaged. Lead fragments were in abundance but nothing of real interest apart from a lot of musket balls of different calibre, some pot mends and a couple of petticoat weights. Miscellaneous brass or copper or copper alloy horse fittings in the form of decoration and heraldic pendants were recovered most of them broken or damaged. A few random metallic objects are yet to be identified. Apologies for the poor quality of some illustrations and possible errors in identification but for various reasons it was not possible to make accurate from photographs taken at the event.

A miscellaneous selection of buttons were found ranging from small Tudor doublet buttons to the bolder Georgian “Dandy” type and to the military type of World War two period.

Other items have not been included due to excessive corrosion, soil adhesion or damage making them non-identifiable. Footnotes marked thus * Where more than one item of the same description has been recorded will be marked (1)

Kindly note that illustrations are not to scale.

1	Late Medieval Crotal Bell.
2	Copper alloy Medieval buckle.
3	Copper alloy Roman “Colchester” Fibula brooch.
4	19 th /20 th brass century thimble.
5	Enamel badge 20 th century.
6	19 th /20 th brass century thimble.
7	Copper alloy Saxon pin head.
8	Copper alloy casting – purpose not known.
9	Copper alloy Roman “Colchester” Fibula brooch.
10	Copper alloy “Ring buckle” (14).
11	Copper alloy Medieval Strap mount.
12	Copper alloy Medieval buckle.
13	Copper alloy Horse pendant.
14	Copper alloy Medieval buckle.
15	Late Medieval Crotal Bell.
16	Copper alloy Medieval “Spectacle” buckle.
17	Copper alloy Roman Pilum point.*
18	Copper alloy casting – purpose not known.
19	Copper alloy Saxon strap fitting.
20	Lead candle snuffer (Date not known)
21	Copper alloy Medieval seal = A.
22	Copper alloy Medieval seal = B.

23	Copper alloy Roman "Colchester" Fibula brooch.
24	Copper alloy Roman "La Tene" Fibula brooch.
25	Copper alloy pauper ring.
26	Copper alloy Roman Fibula brooch.
27	Copper alloy articulated Medieval buckle.
28	Copper alloy Medieval buckle.
29	Copper alloy belt fitting = A.
30	Copper alloy belt fitting = B.
31	Copper alloy Georgian buckle fragment.
32	Lead casting – purpose not known.
33	Copper alloy casting – purpose not known.
34	19 th /20 th century Brass surveyors chain marker.
35	Copper alloy Victorian furniture hook.
36	Copper alloy Roman "Colchester" Fibula brooch.
37	Copper alloy Medieval buckle.
38	Copper alloy Medieval Heraldic horse pendant.
39	Copper alloy buckle pin fragment.
40	Copper alloy 20 th century Spitfire (Brooch/badge?)
41	16 th century Silver Hawking (Verval) ring = A.
42	16 th century Silver Hawking (Verval) ring = B.
43	Copper alloy belt mount.
44	Copper alloy Medieval Vesica seal matrix.
45	Copper alloy Georgian buckle.
46	Copper alloy Medieval buckle.
47	Broken Roman/Saxon lead spindle whorl.
48	Iron casket/ cupboard key.
49	Copper alloy buckle pin.
50	Copper alloy Saxon buckle
51	Copper alloy Medieval buckle.
52	Copper alloy Roman "Colchester" Fibula brooch.
53	Copper alloy buckle fragment.
54	Copper alloy casket/ cupboard key.
55	Copper alloy Saxon buckle complete (3)
56	Copper alloy Medieval strap end.
57	Copper alloy Lead conjoined musket balls.
58	Copper alloy Medieval seal matrix = A.
59	Copper alloy Medieval seal matrix = B.
60	Copper alloy Medieval buckle.
61	Copper alloy ornate Victorian buckle.
62	Copper alloy Medieval buckle
63	Copper alloy coin weight?

64	Copper alloy Medieval "Spectacle" buckle.
65	Copper alloy Saxon pin
66	Aluminium snuff tin - A.
67	Aluminium snuff tin - B.
68	Decorative lead "Rose", possibly decoration for large gate
69	Silver Georgian tea spoon
70	Copper alloy object – purpose not known.
71	Copper alloy fragment.
72	Copper alloy buckle.
73	Copper alloy Medieval decorative strap mount
74	Iron horse shoe 19 th /20 th century. (18)
75	Copper alloy Medieval buckle.
76	Gold cuff link 20 th century - A.
77	Gold cuff link 20 th century - B.
78	Pressed copper fragment – possible naval connotation.
79	Copper alloy implement- Purpose not known
80	Decorative copper alloy Victorian button.
81	Copper alloy Saxon disc brooch/pendant with enamel inserts.
82	Decorative silver Georgian/Victorian button.
83	Copper alloy Roman Umbonate disc brooch with enamel inserts.
84	Copper alloy buckle.
85	Copper alloy decorative buckle.
86	Copper alloy Heraldic horse pendant.
87	Gold plain finger ring.
88	Copper alloy Roman apothecary implement.
89	Aluminium alloy snuff tin.
90	Neanderthal bone Tibia with flint scrape marks.?
91	Copper alloy Medieval "Kings Head "buckle.
92	Lead net/steelyard weight.
93	Lead item – purpose not known.
94	Copper alloy Medieval buckle.
95	Plain gold "V" ring 20 th century.
96	Copper alloy Medieval buckle.
97	Copper alloy Medieval buckle.
98	Copper alloy Woad grinding implement?
99	Pressed copper decorative item.
100	Stainless steel pocket knife with measuring scale.
101	Copper alloy decorative item – possibly Saxon shield boss.
102	Copper alloy Medieval mirror cover.
103	Copper alloy buckle.

104	Georgian decorative Tombac button.
105	Copper alloy buckle.
106	Copper alloy Heraldic horse pendant,
107	Copper alloy pocket watch key.
108	Aluminium alloy toy rifle fragment.
109	Copper alloy item – purpose not known.
110	Copper alloy Medieval “Kings Head “buckle.
111	Copper alloy Saxon wrist torque.
112	Copper alloy Roman apothecary implement.
113	Copper alloy implement – age and purpose not known.
114	Copper alloy buckle.
115	Copper alloy Medieval decorative strap mount.
116	Copper alloy Saxon pin.
117	Copper alloy “Colchester” Fibula brooch fragment.
118	Copper alloy Saxon disc brooch.
119	Copper alloy Medieval strap end.
120	Copper alloy decorative casting – purpose not known.
121	Copper alloy Fibula brooch with enamel panels.
122	Copper alloy Medieval buckle.
123	Byzantine (Roman) Silver signet ring.
124	Copper alloy Medieval seal matrix fragment.
125	Copper alloy Saxon pin.
126	Copper alloy Saxon pin head.
127	Lead 18 th century bale seal.
128	Copper alloy Vesta case.
129	Copper alloy Medieval strap end.
130	Tudor copper alloy clothing hook.
131	Letter “S” brooch?
132	Roman copper alloy Fibula brooch fragment.
133	Copper alloy Medieval “spectacle” buckle.
134	Copper alloy buckle fragment.
135	Copper alloy decorative button
136	Copper alloy Copper alloy buckle.
137	Copper alloy Livery button.
138	Copper alloy Barrel key.
139	Copper alloy fragment – purpose not known.
140	Copper alloy gilded decorative button.
141	Copper alloy Copper alloy Medieval seal matrix = A.
142	Copper alloy Copper alloy Medieval seal matrix = B.
143	Copper alloy decorative Tombac button.
144	Copper alloy Jews Harp fragment

145	Lead Roman spindle whorl.
146	Copper alloy Hindu votive figure, Lakshmi.
147	Copper alloy item-purpose not known.
148	Anglo Saxon Disc brooch with Jet? Inserts and gold wire bezels.
149	Decorative silver Livery button.
150	Anglo Saxon wrist bangle.
151	Copper alloy Medieval gilded buckle.
152	Copper alloy spur fragment – date not known.
153	Copper alloy item, possibly a pot handle.
154	Knapped Neolithic chert hand axe.
155	Knapped Neolithic chert knife/scrapper.
156	Copper alloy furniture fitment – drop handle?
157	Anglo Saxon copper alloy strap end.
158	Copper alloy Medieval signet ring.
159	Brass padlock keyhole cover. “20 th century.
160	Toy lead soldier fragment.
161	Copper alloy decorative pendant.
162	Decorative Iron door stud -A.
163	Decorative Iron door stud - B.
164	Decorative gilded earring with feathers, 20 th century.
165	Roman copper alloy “Dolphin” fibula brooch with enamel.
166	Copper alloy fragment- purpose not known.
167	Medieval copper alloy buckle.
168	Copper alloy Tudor button. (4)
169	Lead loom/net weight.
170	Copper alloy buckle fragment.
171	Medieval copper alloy buckle.
172	Aluminium alloy pigeon ring.
173	Roman “chain mail” necklace fragment.
174	Roman copper alloy fibula brooch.
175	Lead loom weight
176	Roman copper alloy fibula brooch fragment.
177	Medieval copper alloy spur rowel fragment.
178	Silver knife/mirror/cane handle pommel? -A
179	Silver knife/mirror/cane handle pommel? -B
180	Silver button with Jet insert – A (Victorian mourning?)
181	Silver button with Jet insert – B (Victorian mourning?)
182	Medieval copper alloy buckle.
183	Medieval copper alloy buckle fragment.
184	Medieval copper alloy buckle.
185	Roman copper alloy “Colchester” fibula brooch fragment.

186	Medieval copper alloy buckle.
187	Georgian copper alloy buckle.
188	Medieval copper alloy strap decoration.
189	Medieval copper alloy suspended lamp fitting.
190	Georgian/Victorian copper alloy furniture fitting, handle rosette.
191	Copper alloy fragment, purpose not known.
192	Copper alloy decorative square button.
193	Silver metal armorial livery button.
194	Decorative copper alloy button.
195	Victorian copper alloy gas lamp fitting.
196	Large Iron key – age not known.
197	17 th century Tombac button.
198	Copper alloy coin weight.

Kindly note that illustrations are not to scale.



5



6



7



8



9



10



11



12



13



14



15



16



17



18



19



20



21



22



23



24



25



26



27



28



29



30



31



32



33



34



35



36



37



38



39



40



41



42



43



44



45



46



47



48



49



50



51



52



53



54



55



56



57



58



59



60



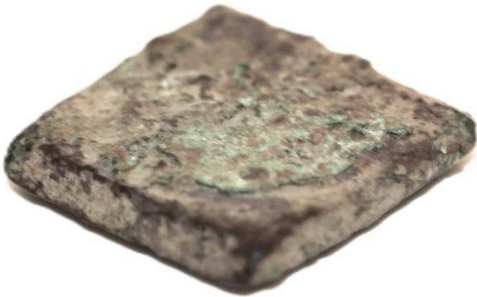
61



62



63



64



65



66



67



68



69



70



71



72



73



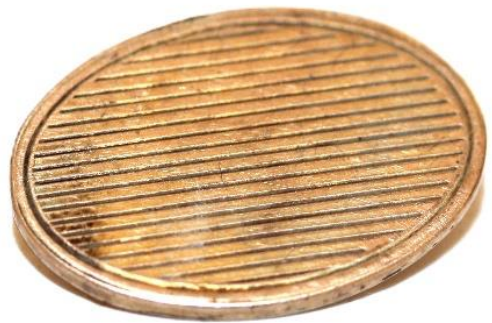
74



75



76



77



78



79



80



81



82



83



84



85



86



87



88



89



90



91



92



93



94



95



96



97



98



99



100



101



102



103



104



105



106



107



108



109



110



111



112



113



114



115



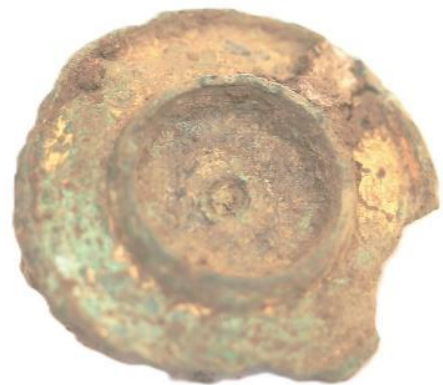
116



117



118



119



120



121



122



123



124



125



126



127



128



129



130



131



132



133



134



135



136



137



138



139



140



141



142



143



144



145



146



147



148



149



150



151



152



153



154



155



156



157



158



159



160



161



162



163



164



165



166



167



168



169



170



171



172



173



174



175



176



177



178



179



180



181



182



183



184



185



186



197



188



189



190



191



192



193



194



195



206



207



208



210



209



211



212

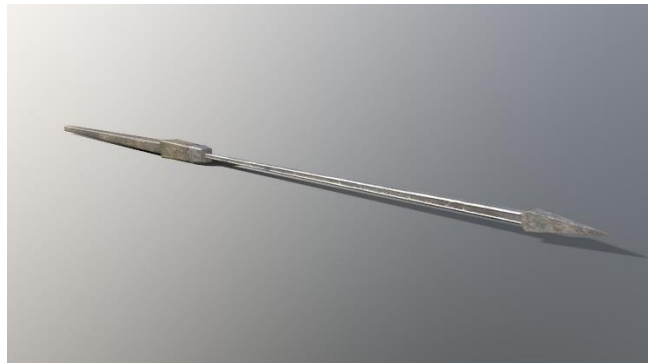


213

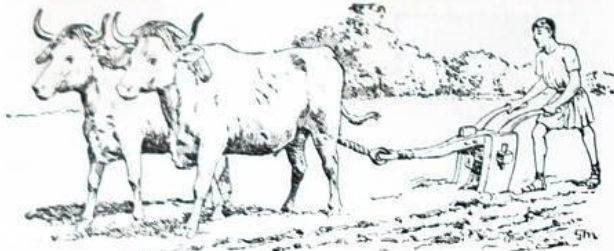


214

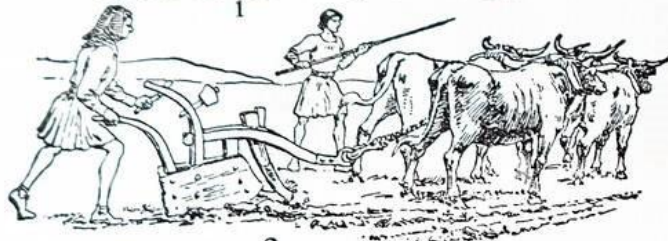
*



HOW DID FARMERS WORK IN DAYS GONE BY?



1



2



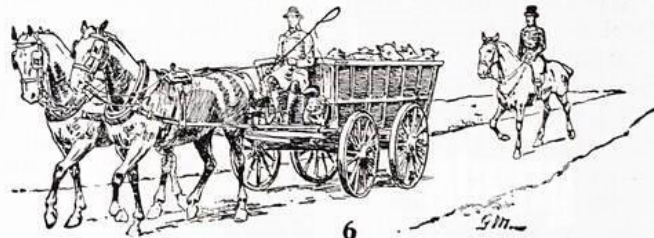
3



4



5



6



7



8

1. Ploughing in Roman times. 2. A Saxon ploughing. 3. Saxon sowing seed. 4. Norman carving a joint. 5. Ploughing 200 years ago. 6. Going to market 100 years ago. 7. A serf of Saxon times at work. 8. A Saxon farm.

COINAGE

Coinage recovered dated from Celtic to current decimal issues, the majority being Hammered silver dating from between 1200 to 1600 included cut halves (Ha'penny) and quarters (Fourthing later farthing) which makes exact dating difficult, adding to the difficulty is the old common practice of clipped edges. The photographs do not illustrate all coins found as due to excessive corrosion, soil or damage therefore would lack definition. The pictures show some of the coins found and are in no specific order and not attributed to any one person. Where possible both obverse and reverse images have been shown also where possible Monarchs and dates have been included.

n.b. Coins not possible to date are marked thus #

	<i>TYPE</i>	<i>SIDE</i>	<i>MONARCH</i>	<i>DATE</i>
1	Roman bronze	Obverse	#	Circa 2 nd centur
2	Roman bronze	Reverse	#	Circa 2 nd centur
3	Roman bronze	Obverse	#	Circa 2 nd centur
4	Roman bronze	Reverse	#	Circa 2 nd centur
5	Roman bronze	Obverse	#	Circa 2 nd centur
6	Roman bronze	Reverse	#	Circa 2 nd centur
7	Hammered Silver cut half	Obverse	#	1200-1400
8	Hammered Silver cut half	Reverse	#	1200-1400
9	Hammered Silver cut half	Obverse	#	1200-1400
10	Hammered Silver cut half	Reverse	#	1200-1400
11	Roman bronze	Obverse	#	Circa 2 nd centur
12	Roman bronze	Reverse	#	Circa 2 nd centur
13	Roman bronze	Obverse	#	Circa 2 nd centur
14	Roman bronze	Reverse	#	Circa 2 nd centur
15	Roman bronze	Obverse	#	Circa 2 nd centur
16	Roman bronze	Reverse	#	Circa 2 nd centur
17	Roman bronze	Obverse	#	Circa 2 nd centur
18	Roman bronze	Reverse	#	Circa 2 nd centur
19	Hammered silver penny	Obverse	King Edward?	1200-1400
20	Hammered silver penny	Reverse	King Edward?	1200-1400
21	Silver Florin	Obverse	King William 3rd	1694-1702
22	Silver Florin	Reverse	King William 3rd	1694-1702
23	Silver Shilling	Obverse	Queen Victoria	1881
24	Silver Shilling	Reverse	Queen Victoria	1881
25	Silver Florin	Obverse	King William 3rd	1694-1702
26	Silver Florin	Reverse	King William 3rd	1694-1702

27	Hammered Silver cut half	Obverse	#	1200-1400
28	Hammered Silver cut half	Reverse	#	1200-1400
29	Silver sixpence	Obverse	King George 5th	1922
30	Silver sixpence	Reverse	King George 5th	1922
31	Hammered silver penny	Obverse	#	1200-1400
32	Hammered silver penny	Reverse	#	1200-1400
33	Hammered silver florin	Obverse	#	1200-1400
34	Hammered silver florin	Reverse	#	1200-1400
35	Hammered silver penny	Obverse	#	1200-1400
36	Hammered silver penny	Reverse	#	1200-1400
37	"Cartwheel" penny	Obverse	King George 3rd	1797
38	"Cartwheel" penny	Reverse	King George 3rd	1797
39	Silver florin	Obverse	Queen Victoria	1840/1850
40	Silver florin	Reverse	Queen Victoria	1840/1850
41	Hammered silver shilling	Obverse	Queen Elizabeth 1st	1558-1603
42	Hammered silver shilling	Reverse	Queen Elizabeth 1st	1558-1603
43	Roman bronze	Obverse	#	Circa 2 nd century
44	Roman bronze	Reverse	#	Circa 2 nd century
45	Hammered silver penny	Obverse	#	1200-1400
46	Hammered silver penny	Reverse	#	1200-1400
47	Silver Celtic silver unit	Obverse	#	Circa 65 BC
48	Silver Celtic silver unit	Reverse	#	Circa 65 BC
49	Gold guinea	Obverse	King George 3rd	1801
50	Gold guinea	Reverse	King George 3rd	1801
51	Roman silver siliqua	Obverse	#	43-410 AD
52	Roman silver siliqua	Reverse	#	43-410 AD
53	Hammered silver penny	Obverse	#	1200-1400
54	Hammered silver penny	Reverse	#	1200-1400
55	Hammered silver penny	Obverse	#	1200-1400
56	Hammered silver penny	Reverse	#	1200-1400
57	Roman bronze	Obverse	Magentius	350-353 AD
58	Roman bronze	Reverse	Magentius	350-353 AD
59	Copper penny	Obverse	King George 5th	1910-1936
60	Copper penny	Reverse	King George 5th	1910-1936
61	Hammered silver shilling?	Obverse	#	1200-1400
62	Hammered silver shilling?	Reverse	#	1200-1400
63	Hammered silver penny	Obverse	#	1200-1400
64	Hammered silver penny	Reverse	#	1200-1400
65	Hammered silver penny	Obverse	#	1200-1400
66	Hammered silver penny	Reverse	#	1200-1400
67	Hammered silver penny	Obverse	#	1200-1400

68	Hammered silver penny	Reverse	#	1200-1400
69	Hammered silver penny	Obverse	#	1200-1400
70	Hammered silver penny	Reverse	#	1200-1400
71	Hammered silver penny	Obverse	#	1200-1400
72	Hammered silver penny	Reverse	#	1200-1400
73	Hammered silver penny	Obverse	#	1200-1400
74	Hammered silver penny	Reverse	#	1200-1400
75	Hammered silver penny	Obverse	#	1200-1400
76	Hammered silver penny	Reverse	#	1200-1400
77	Roman bronze	Obverse	#	Circa 2 nd centur
78	Roman bronze	Reverse	#	Circa 2 nd centur
79	Roman bronze	Obverse	#	Circa 2 nd centur
80	Roman bronze	Reverse	#	Circa 2 nd centur
81	Hammered silver penny	Obverse	#	1200-1400
82	Hammered silver penny	Reverse	#	1200-1400
83	Hammered silver penny	Obverse	#	1200-1400
84	Hammered silver penny	Reverse	#	1200-1400
85	Hammered silver cut half penny	Obverse	#	1200-1400
86	Hammered silver cut half penny	Reverse	#	1200-1400
87	Hammered silver farthing	Obverse	#	1200-1400
88	Hammered silver farthing	Reverse	#	1200-1400
89	Roman bronze	Obverse	#	Circa 2 nd centur
90	Roman bronze	Reverse	#	Circa 2 nd centur
91	Hammered silver cut half penny	Obverse	#	1200-1400
92	Hammered silver cut half penny	Reverse	#	1200-1400
93	Hammered silver groat	Obverse	Queen Elizabeth 1st	1574
94	Hammered silver groat	Reverse	Queen Elizabeth 1st	1574
95	Hammered silver penny	Obverse	#	1200-1400
96	Hammered silver penny	Reverse	#	1200-1400
97	Copper penny	Obverse	George 3rd	?
98	Copper penny	Reverse	George 3rd	?
99	Hammered silver penny	Obverse	#	1200-1400
100	Hammered silver penny	Reverse	#	1200-1400
101	Silver shilling	Obverse	George 3rd	1817
102	Silver shilling	Reverse	George 3rd	1817
103	Roman Bronze	Obverse	#	Circa 2 nd centur
104	Roman Bronze	Reverse	#	Circa 2 nd centur
105	Roman Bronze	Obverse	#	Circa 2 nd centur
106	Roman Bronze	Reverse	#	Circa 2 nd centur
107	Roman Bronze	Obverse	#	Circa 2 nd centur
108	Roman Bronze	Reverse	#	Circa 2 nd centur

109	Hammered silver penny	Obverse	#	1200-1400
110	Hammered silver penny	Reverse	#	1200-1400
111	Copper "Rose farthing	Obverse	King Charles 1st	Circa 1645
112	Copper "Rose farthing	Reverse	King Charles 1st	Circa 1645
113	Hammered silver shilling	Obverse	Queen Elizabeth 1st	1570
114	Hammered silver shilling	Reverse	Queen Elizabeth 1st	1570
115	Hammered silver penny	Obverse	#	1200-1400
116	Hammered silver penny	Reverse	#	1200-1400
117	Hammered silver shilling	Obverse	Queen Elizabeth 1st	1558-1603
118	Hammered silver shilling	Reverse	Queen Elizabeth 1st	1558-1603
119	Hammered silver shilling	Obverse	King Charles 1st	1625-1649
120	Hammered silver shilling	Reverse	King Charles 1st	1625-1649
121	Silver threepence	Obverse	King George 5th	1919
122	Silver threepence	Reverse	King George 5th	1919
123	Hammered silver penny	Obverse	#	1200-1400
124	Hammered silver penny	Reverse	#	1200-1400
125	Hammered silver cut half penny	Obverse	#	1200-1400
126	Hammered silver cut half penny	Reverse	#	1200-1400
127	Hammered silver shilling	Obverse	Queen Elizabeth 1st	1558-1603
128	Hammered silver shilling	Reverse	Queen Elizabeth 1st	1558-1603
129	Roman bronze	Obverse	#	Circa 2 nd centur
130	Roman bronze	Reverse	#	Circa 2 nd centur
131	Roman bronze	Obverse	#	Circa 2 nd centur
132	Roman bronze	Reverse	#	Circa 2 nd centur
133	Hammered silver half groat	Obverse	#	1200-1400
134	Hammered silver half groat	Reverse	#	1200-1400
135	Hammered silver penny	Obverse	#	1200-1400
136	Hammered silver penny	Reverse	#	1200-1400
137	Celtic gold half stater	Obverse	#	Circa 65 BC
138	Celtic gold half stater	Reverse	#	Circa 65 BC
139	Hammered silver penny	Obverse	#	1200-1400
140	Hammered silver penny	Reverse	#	1200-1400
141	Hammered silver penny	Obverse	#	1200-1400
142	Hammered silver penny	Reverse	#	1200-1400
143	Hammered silver cut half penny	Obverse	#	1200-1400
144	Hammered silver cut half penny	Reverse	#	1200-1400
145	Roman bronze	Obverse	#	Circa 2 nd centur
146	Roman bronze	Reverse	#	Circa 2 nd centur
147	Roman bronze	Obverse	#	Circa 2 nd centur
148	Roman bronze	Reverse	#	Circa 2 nd centur
149	Hammered silver penny	Obverse	#	1200-1400

150	Hammered silver penny	Reverse	#	1200-1400
151	Hammered silver half groat	Obverse	#	1200-1400
152	Hammered silver half groat	Reverse	#	1200-1400
153	Hammered silver groat	Obverse	#	1200-1400
154	Hammered silver groat	Reverse	#	1200-1400
155	Hammered silver penny	Obverse	#	1200-1400
156	Hammered silver penny	Reverse	#	1200-1400
157	Hammered silver penny	Obverse	#	1200-1400
158	Hammered silver penny	Reverse	#	1200-1400
159	Hammered silver penny	Obverse	#	1200-1400
160	Hammered silver penny	Reverse	#	1200-1400
161	Hammered silver penny	Obverse	#	1200-1400
162	Hammered silver penny	Reverse	#	1200-1400
163	Roman bronze	Obverse	#	Circa 2 nd centur
164	Roman bronze	Reverse	#	Circa 2 nd centur
165	Hammered silver penny	Obverse	#	1200-1400
166	Hammered silver penny	Reverse	#	1200-1400
167	Hammered silver penny	Obverse	#	1200-1400
168	Hammered silver penny	Reverse	#	1200-1400
169	Hammered silver penny	Obverse	#	1200-1400
170	Hammered silver penny	Reverse	#	1200-1400
171	Hammered silver penny	Obverse	#	1200-1400
172	Hammered silver penny	Reverse	#	1200-1400
173	Hammered silver penny	Obverse	#	1200-1400
174	Hammered silver penny	Reverse	#	1200-1400
175	Copper "Cartwheel penny	Obverse	King George 3rd	1797
176	Copper "Cartwheel penny	Reverse	King George 3rd	1797
177	Hammered silver cut half penny	Obverse	#	1200-1400
178	Hammered silver cut half penny	Reverse	#	1200-1400
179	Roman bronze	Obverse	#	Circa 2 nd centur
180	Roman bronze	Reverse	#	Circa 2 nd centur
181	Hammered silver three pence *	Obverse	King Charles 1st	1645
182	Hammered silver three pence *	Reverse	King Charles 1st	1645
183	Hammered silver penny	Obverse	#	1200-1400
184	Hammered silver penny	Reverse	#	1200-1400
185	Silver Shilling	Obverse	King William 3rd	1694-1702
186	Silver Shilling	Reverse	King William 3rd	1694-1702
187	Hammered silver cut half penny	Obverse	#	1200-1400
188	Hammered silver cut half penny	Reverse	#	1200-1400
189	Gold half Sovereign	Obverse	King Edward 7th	1801
190	Gold half Sovereign	Reverse	King Edward 7th	1801

191	Silver florin	Obverse	Queen Victoria	1840-1850
192	Silver florin	Reverse	Queen Victoria	1840-1850
193	Hammered silver penny	Obverse	#	1200-1400
194	Hammered silver penny	Reverse	#	1200-1400
195	Gold half Sovereign	Obverse	King George 4th	1828
196	Gold half Sovereign	Reverse	King George 4th	1828
197	Gold half Guinea	Obverse	King Charles 2nd	1662-1685
198	Gold half Guinea	Reverse	King Charles 2 nd	1662-1685
199	Hammered silver penny	Obverse	#	1200-1400
200	Hammered silver penny	Reverse	#	1200-1400
201	Roman bronze	Obverse	#	Circa 2 nd centur
202	Roman bronze	Reverse	#	Circa 2 nd centur
203	Roman bronze	Obverse	#	Circa 2 nd centur
204	Roman bronze	Reverse	#	Circa 2 nd centur
205	Roman bronze	Obverse	#	Circa 2 nd centur
206	Roman bronze	Reverse	#	Circa 2 nd centur
207	Hammered silver cut half penny	Obverse	#	1200-1400
208	Hammered silver cut half penny	Reverse	#	1200-1400
209	Hammered silver cut half penny	Obverse	#	1200-1400
210	Hammered silver cut half penny	Reverse	#	1200-1400
211	Copper half penny	Obverse	George 3rd	?
212	Copper half penny	Reverse	George 3rd	?
213	Roman silver denarius	Obverse	#	Circa 2 nd centur
214	Roman silver denarius	Reverse	#	Circa 2 nd centur
215	Roman bronze	Obverse	#	Circa 2 nd centur
216	Roman bronze	Reverse	#	Circa 2 nd centur
217	Hammered silver penny	Obverse	#	1200-1400
218	Hammered silver penny	Reverse	#	1200-1400
219	Silver Shilling	Obverse	Queen Victoria	1881
220	Silver Shilling	Reverse	Queen Victoria	1881
221	Silver Shilling	Obverse	King William 3rd	1694-1702
222	Silver Shilling	Reverse	King William 3rd	1694-1702
223	Silver sixpence	Obverse	King George 5th	1922
224	Silver sixpence	Reverse	King George 5th	1922
225	Silver Florin	Obverse	King George 3rd	?
226	Silver Florin	Reverse	King George 3rd	?
227	Hammered silver groat	Obverse	#	1200-1400
228	Hammered silver groat	Reverse	#	1200-1400
229	Hammered silver shilling	Obverse	Queen Elizabeth 1st	1572
230	Hammered silver shilling	Reverse	Queen Elizabeth 1st	1572
231	Roman bronze	Obverse	#	Circa 2 nd centur

232	Roman bronze	Reverse	#	Circa 2 nd century
233	Hammered silver penny	Obverse	#	1200-1400
234	Hammered silver penny	Reverse	#	1200-1400
235	Silver sixpence	Obverse	King George 6th	1943
236	Silver sixpence	Reverse	King George 6th	1943
237	Silver florin	Obverse	King George 6th	1941
238	Silver florin	Reverse	King George 6th	1941
239	Silver florin	Obverse	King George 6th	1943
240	Silver florin	Reverse	King George 6th	1943
241	Hammered silver cut quarter	Obverse	#	1200-1400
242	Hammered silver cut quarter	Reverse	#	1200-1400
243	Hammered silver farthing	Obverse	#	1200-1400
244	Hammered silver farthing	Reverse	#	1200-1400
245	Hammered silver penny	Obverse	#	1200-1400
246	Hammered silver penny	Reverse	#	1200-1400
247	Hammered silver penny	Obverse	#	1200-1400
248	Hammered silver penny	Reverse	#	1200-1400
249	Hammered silver penny	Obverse	#	1200-1400
250	Hammered silver penny	Reverse	#	1200-1400
251	Copper "Cartwheel" penny	Obverse	King George 3rd	1797
252	Copper "Cartwheel" penny	Reverse	King George 3rd	1797

Kindly note that illustrations are not to scale.



<p>9</p> 	<p>10</p> 	<p>11</p> 	<p>12</p> 
<p>13</p> 	<p>14</p> 	<p>15</p> 	<p>16</p> 
<p>17</p> 	<p>18</p> 	<p>19</p> 	<p>20</p> 
<p>21</p> 	<p>22</p> 	<p>23</p> 	<p>24</p> 
<p>25</p> 	<p>26</p> 	<p>27</p> 	<p>28</p> 

<p style="text-align: center;">29</p> 	<p style="text-align: center;">30</p> 	<p style="text-align: center;">31</p> 	<p style="text-align: center;">32</p> 
<p style="text-align: center;">33</p> 	<p style="text-align: center;">34</p> 	<p style="text-align: center;">35</p> 	<p style="text-align: center;">36</p> 
<p style="text-align: center;">37</p> 	<p style="text-align: center;">38</p> 	<p style="text-align: center;">39</p> 	<p style="text-align: center;">40</p> 
<p style="text-align: center;">41</p> 	<p style="text-align: center;">42</p> 	<p style="text-align: center;">43</p> 	<p style="text-align: center;">44</p> 

<p>45</p> 	<p>46</p> 	<p>47</p> 	<p>48</p> 
<p>49</p> 	<p>50</p> 	<p>51</p> 	<p>52</p> 
<p>53</p> 	<p>54</p> 	<p>55</p> 	<p>56</p> 
<p>57</p> 	<p>58</p> 	<p>59</p> 	<p>60</p> 
<p>61</p> 	<p>62</p> 	<p>63</p> 	<p>64</p> 






<p>65</p> 	<p>66</p> 	<p>67</p> 	<p>68</p> 
<p>69</p> 	<p>70</p> 	<p>71</p> 	<p>72</p> 
<p>73</p> 	<p>74</p> 	<p>75</p> 	<p>76</p> 
<p>77</p> 	<p>78</p> 	<p>79</p> 	<p>80</p> 

<p>81</p> 	<p>82</p> 	<p>83</p> 	<p>84</p> 
<p>85</p> 	<p>86</p> 	<p>87</p> 	<p>88</p> 
<p>89</p> 	<p>90</p> 	<p>91</p> 	<p>92</p> 
<p>93</p> 	<p>94</p> 	<p>95</p> 	<p>96</p> 
<p>97</p> 	<p>98</p> 	<p>99</p> 	<p>100</p> 

<p>101</p> 	<p>102</p> 	<p>103</p> 	<p>104</p> 
<p>105</p> 	<p>106</p> 	<p>107</p> 	<p>108</p> 
<p>109</p> 	<p>110</p> 	<p>111</p> 	<p>112</p> 
<p>113</p> 	<p>114</p> 	<p>115</p> 	<p>116</p> 

<p>117</p> 	<p>118</p> 	<p>119</p> 	<p>120</p> 
<p>121</p> 	<p>122</p> 	<p>123</p> 	<p>124</p> 
<p>125</p> 	<p>126</p> 	<p>127</p> 	<p>128</p> 
<p>129</p> 	<p>130</p> 	<p>131</p> 	<p>132</p> 

<p>133</p> 	<p>134</p> 	<p>135</p> 	<p>136</p> 
<p>137</p> 	<p>138</p> 	<p>139</p> 	<p>140</p> 
<p>141</p> 	<p>142</p> 	<p>143</p> 	<p>144</p> 
<p>145</p> 	<p>146</p> 	<p>147</p> 	<p>148</p> 
<p>149</p> 	<p>150</p> 	<p>151</p> 	<p>152</p> 

<p>153</p> 	<p>154</p> 	<p>155</p> 	<p>156</p> 
<p>157</p> 	<p>158</p> 	<p>159</p> 	<p>160</p> 
<p>161</p> 	<p>162</p> 	<p>163</p> 	<p>164</p> 
<p>165</p> 	<p>166</p> 	<p>167</p> 	<p>168</p> 
<p>169</p> 	<p>170</p> 	<p>171</p> 	<p>172</p> 

<p>173</p> 	<p>174</p> 	<p>175</p> 	<p>176</p> 
<p>177</p> 	<p>178</p> 	<p>179</p> 	<p>1780</p> 
<p>181</p> 	<p>182</p> 	<p>183</p> 	<p>184</p> 
<p>185</p> 	<p>186</p> 	<p>187</p> 	<p>188</p> 
<p>189</p> 	<p>190</p> 	<p>191</p> 	<p>192</p> 

<p style="text-align: center;">193</p> 	<p style="text-align: center;">194</p> 	<p style="text-align: center;">195</p> 	<p style="text-align: center;">196</p> 
<p style="text-align: center;">197</p> 	<p style="text-align: center;">198</p> 	<p style="text-align: center;">199</p> 	<p style="text-align: center;">200</p> 
<p style="text-align: center;">201</p> 	<p style="text-align: center;">202</p> 	<p style="text-align: center;">203</p> 	<p style="text-align: center;">204</p> 
<p style="text-align: center;">205</p> 	<p style="text-align: center;">206</p> 	<p style="text-align: center;">207</p> 	<p style="text-align: center;">208</p> 
<p style="text-align: center;">209</p> 	<p style="text-align: center;">210</p> 	<p style="text-align: center;">211</p> 	<p style="text-align: center;">212</p> 

<p>213</p> 	<p>214</p> 	<p>215</p> 	<p>216</p> 
<p>217</p> 	<p>218</p> 	<p>219</p> 	<p>220</p> 
<p>221</p> 	<p>222</p> 	<p>223</p> 	<p>224</p> 
<p>225</p> 	<p>226</p> 	<p>227</p> 	<p>228</p> 

<p>229</p> 	<p>230</p> 	<p>231</p> 	<p>232</p> 
<p>233</p> 	<p>234</p> 	<p>235</p> 	<p>236</p> 
<p>237</p> 	<p>238</p> 	<p>239</p> 	<p>240</p> 
<p>241</p> 	<p>242</p> 	<p>243</p> 	<p>244</p> 
<p>245</p> 	<p>246</p> 	<p>247</p> 	<p>248</p> 



JETTONS & TOKENS

- Jettons are not strictly coinage but minted for use in merchants' calculations. Sums were carried out using counting boards or cloths which bore a chequered pattern or lines. Jettons were set on the lines/squares, each line/square having a value in Roman numerals, and moved around the board/cloth to perform addition or subtraction.

1	Nuremburg Jetton Hans Krauwinkel	16 th century
2	Nuremburg Jetton Hans Krauwinkel	16 th century
3	Nuremburg Jetton Hans Schultzl	16 th century
4	Nuremburg Jetton Hans Schultzl	16 th century
5	Nuremburg Jetton Hans Krauwinkel	16 th century
6	Nuremburg Jetton Hans Krauwinkel	16 th century
7	French Jetton – 16 th century	16 th century
8	French Jetton – 16 th century	16 th century
9	Nuremburg Jetton ?	16 th century
10	Nuremburg Jetton ?	16 th century
11	Nuremburg Jetton Hans Krauwinkel	16 th century
12	Nuremburg Jetton Hans Krauwinkel	16 th century
13	Nuremburg Jetton Hans Krauwinkel	16 th century
14	Nuremburg Jetton Hans Krauwinkel	16 th century
15	Work house token	17/18 th century
16	Work house token	17/18 th century

1



2



3



4



5



6



7



8



9



10



11



12



13



14



15



16



MILITARIA

Listed are a few identifiable items of militaria recovered, many were found but corroded or damaged

1	Royal Navy belt buckle.
2	Royal Navy button.
3	Royal Corps of Signals button.
4	Middlesex regiment cap badge.
5	Component from Civil war musket/rifle-trigger mechanism.
6	Component from Civil war musket/rifle.
7	Component from Civil war musket/rifle- trigger guard.
8	Rifle bullet- .69 calibre.
9	Lead pistol and musket balls-Civil war era.
10	Lead conjoined musket balls as from mould Civil war era
11	Rifle bullet -
12	Rifle bullet - .22 calibre



<p>5</p> 	<p>6</p> 
<p>7</p> 	<p>8</p> 
<p>9</p> 	<p>10</p> 
<p>11</p> 	<p>12</p> 

13



POTTERY

The majority of recovered pottery shards seem to have come from the Roman occupation (2nd century) but a more in-depth analysis would be more specific, one pot rim assumed to be bronze age.

<u>1</u>	Bronze age "all-over corded beaker	Circa 2000 - 700 B.C.
<u>2</u>	Roman grey ware	2 nd century
<u>3</u>	Amphora handle?	2 nd century
<u>4</u>	Amphora handle?	2 nd century
<u>5</u>	Roman black burnished ware	2 nd century
<u>6</u>	Roman Mortaria	2 nd century
<u>7</u>	Roman Samian ware	Circa AD 43 - AD 409
<u>8</u>	Roman Oxfordshire colour coated ware	4 th century
<u>9</u>	Late Saxon York ware	10 th - 12 th century
<u>10</u>	Medieval Lincoln ware	14 th - 15 th century
<u>11</u>	Medieval green ware	14 th - 15 th century
<u>12</u>	English & Chinese, German & Dutch imported blue ware	17 th - 18 th



3



4



5



6



7



8



9



10



11



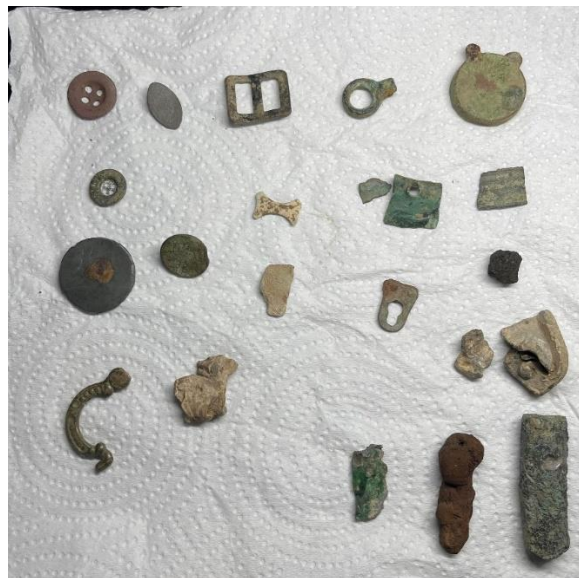
12



COLLECTIONS

Assembled and assorted recovered items as submitted by members, some items are also pictured elsewhere.











All metallic objects recovered lacking historic interest were removed from the field and deposited in the skips provided to be removed and disposed of in an approved manner.



